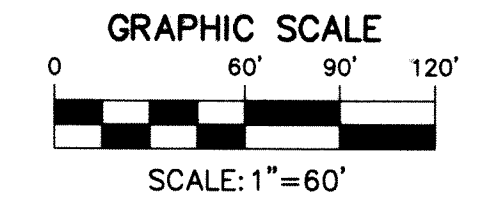
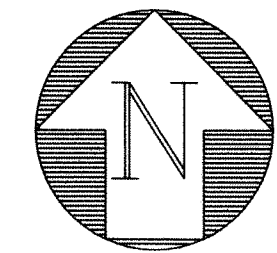


# TUTTLE ROYALE

BEING A REPLAT OF SHOPPES AT VILLAGE ROYALE AS RECORDED IN PLAT BOOK 124, PAGES 68 THROUGH 71, PUBLIC RECORDS OF PALM BEACH COUNTY, FLORIDA AND BEING A REPLAT OF A PORTION OF THE PLAT OF PALM BEACH FARMS PLAT NO.3 AS RECORDED IN PLAT BOOK 2, PAGES 45 THROUGH 54, PUBLIC RECORDS OF PALM BEACH COUNTY, FLORIDA AND LYING IN A PORTION OF SECTION 36, TOWNSHIP 43 SOUTH, RANGE 41 EAST, AND SECTION 1, TOWNSHIP 44 SOUTH, RANGE 41 EAST, THE VILLAGE OF ROYAL PALM BEACH, PALM BEACH COUNTY, FLORIDA

DECEMBER 2021  
SHEET 10 OF 13



STATE OF FLORIDA  
COUNTY OF PALM BEACH

THIS PLAT WAS FILED FOR  
RECORD AT \_\_\_\_\_

THIS \_\_\_\_\_ DAY OF \_\_\_\_\_  
AND DULY RECORDED  
IN PLAT BOOK NO. \_\_\_\_\_  
ON PAGE(S) \_\_\_\_\_

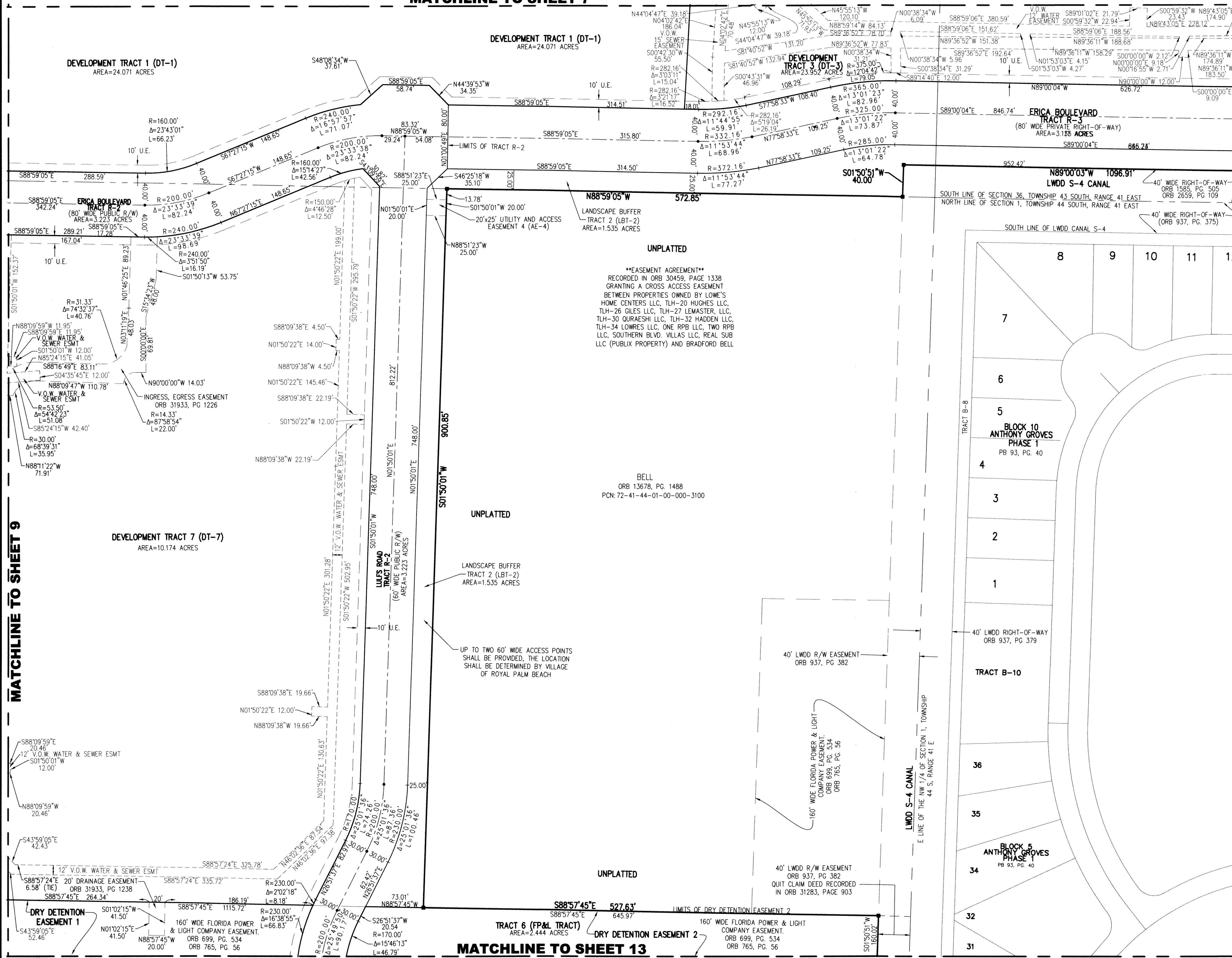
JOSEPH ABRUZZO,  
CLERK AND CIRCUIT COURT &  
COMPTROLLER

BY: \_\_\_\_\_  
DEPUTY CLERK

110

MATCHLINE TO SHEET 7

MATCHLINE TO SHEET 11 PANEL A



UNPLATTED  
\*\*EASEMENT AGREEMENT\*\*  
RECORDED IN ORB 30459, PAGE 1338  
GRANTING A CROSS ACCESS EASEMENT  
BETWEEN PROPERTIES OWNED BY LOWE'S  
HOME CENTERS LLC, TLH-20 HUGHES LLC,  
TLH-26 GILES LLC, TLH-27 LEMASTER, LLC,  
TLH-30 OURAESHI LLC, TLH-32 HADDEN LLC,  
TLH-34 LOWRES LLC, ONE RPB LLC, TWO RPB  
LLC, SOUTHERN BLVD, VILLAS LLC, REAL SUB  
LLC (PUBLIC PROPERTY) AND BRADFORD BELL

BELL  
ORB 13678, PG. 1488  
PCN: 72-41-44-01-00-000-3100

- LEGEND**
- ⊕ CENTERLINE
  - ⊖ LAKE WORTH DRAINAGE DISTRICT
  - ORB OFFICIAL RECORD BOOK
  - SF/WMD SOUTH FLORIDA WATER MANAGEMENT DISTRICT
  - P/B PLAT BOOK
  - PG(S) PAGE(S)
  - R/W RIGHT-OF-WAY
  - SET 4" X 4" CONCRETE MONUMENT
  - WITH ALUMINUM DISK STAMPED P.R.M. LB#6603
  - FOUND PERMANENT REFERENCE MONUMENT AS NOTED
  - SET MAG NAIL AND DISK PCP LB#6603
  - R RADIUS
  - L ARC LENGTH
  - Δ DELTA ANGLE
  - D.B. DEED BOOK
  - LB LICENSED BUSINESS
  - PRM PERMANENT REFERENCE MONUMENT
  - PCP PERMANENT CONTROL POINT
  - ESMT EASEMENT
  - V.O.W. VILLAGE OF WELLINGTON
  - PRT PRIVATE RECREATION TRACT



1280 N. CONGRESS AVENUE, SUITE 101,  
WEST PALM BEACH, FLORIDA 33409  
PH (561) 855-1151 • FAX (561) 832-9390  
WWW.ENGENUITYGROUP.COM

**TUTTLE ROYALE**

DATE	2/2/2022
SCALE	1"=60'
CAD FILE	13037.96 MASTER PLAT
SISK PROJECT	13037.04 SR 80 RPB ADD.
DRAWN	STAFF
CHECKED	STAFF

S H E E T	10/13
13037.96	

Y:\Land Projects R2\13037.04 SR 80 Royal Palm Beach Addition\eng\13037.96 Master Plat.dwg 2/15/2022 11:17:19 AM EST

MATCHLINE TO SHEET 9

MATCHLINE TO SHEET 13